



Land Information Ontario

NRVIS/OLIW Data Management Model For Geographic Name Extent (v.4) Published Edition

Issued: July 4, 2007

Table of Contents

| | |
|--|----|
| <i>Disclaimer</i> | 3 |
| Additional Information | 3 |
| <i>Preface</i> | 4 |
| <i>Background and Context</i> | 4 |
| <i>Current Status of Data Class</i> | 4 |
| <i>Data Class Version History</i> | 5 |
| <i>Contact Roles and Responsibilities</i> | 5 |
| <i>Metadata</i> | 5 |
| General Information | 5 |
| Data Class Business Area Usage | 6 |
| Data Class Vintage Details | 6 |
| Data Class Geospatial Details | 6 |
| Data Class Sources | 7 |
| Data Class Information Products | 12 |
| <i>Data Class Maintenance Standards</i> | 13 |
| Maintenance Standards Summary | 19 |
| <i>Data Class Access Standards</i> | 19 |
| Sensitivity Classification | 20 |
| LIMBS View (Warehouse interactive internet map browser) | 22 |
| Web Mapping Service (WMS) | 22 |
| Web Feature Service (WFS) | 22 |
| <i>Data Class Model</i> | 22 |
| Geographic Unit Types | 22 |
| Logical Data Model (Business View) | 33 |
| Data Dictionary | 34 |
| Lookup Table Index | 39 |
| Lookup Tables with 2-3 Business-Defined Columns | 39 |
| <i>Appendix 1: Reading an Entity-Relationship Diagram</i> | 43 |
| <i>Appendix 2: Interpreting a Data Dictionary</i> | 45 |

Disclaimer

This technical documentation has been prepared by the Ministry of Natural Resources (the "Ministry"), representing Her Majesty the Queen in right of Ontario. No warranties or representations, express or implied, statutory or otherwise shall apply or are being made by the Ministry with respect to the documentation, its accuracy or its completeness. In no event will the Ministry be liable or responsible for any lost profits, loss of revenue or earnings, claims by third parties or for any economic, indirect, special, incidental, consequential or exemplary damage resulting from any errors, inaccuracies or omissions in this documentation; and in no event will the Ministry's liability for any such errors, inaccuracies or omissions on any particular claim, proceeding or action, exceed the actual consideration paid by the claimant involved to the Ministry for the materials to which this instructional documentation relates. Save and except for the liability expressly provided for above, the Ministry shall have no obligation, duty or liability whatsoever in contract, tort or otherwise, including any liability or negligence. The limitations, exclusions and disclaimers expressed above shall apply irrespective of the nature of any cause of action, demand or action, including but not limited to breach of contract, negligence, strict liability, tort or any other legal theory, and shall survive any fundamental breach or breaches.

Additional Information

For more information about this document, please contact Land Information Ontario at (705) 755-1878 or lio@ontario.ca.

This document was prepared by:

Refer to the *DMM Users-Guide to the Published Edition* for additional details about the context of information collected for a Data Management Model.

This document was generated using *DMM Edition Template Version: 2.1*

Published July, 2007
© 2007, Queen's Printer for Ontario

Preface

For most of the Ontario Government’s geospatial information holdings, successful data management is achieved through the process of documenting data standards. This document summarizes the basic data management requirements for specific Land Information Ontario (LIO) Data Class(es).

Several corporate applications are used by LIO to manage, disseminate, protect and make accessible where available, all of the geospatial holdings that reside within the Ontario Land Information Warehouse (OLIW). The major applications are:

- Data Standards Repository (DSR)
- Land Information Data Subscription System (LIDS)
- Land Information Publishing System (LIPS)
- Land Information Security Administration System (LISA)
- LIO Internet Mapping Framework (IMF - includes View, Web Mapping and Web Feature Services)
- Natural Resources Values Information System (NRVIS) Administration
- Ontario Land Information Directory (OLID)

Clients should consult the official OLID metadata record for any additional information about the Data Class not found in this document (www.lio.gov.on.ca). LIO also has a Support Team that can answer additional questions about a Data Class. This Support Team uses a **three-tiered support model** to assist clients, described below.

When a user/client has a question about the dataset, they will initially contact...

| Tier | Service Provider | Phone | email |
|------|------------------------------------|----------------|--|
| 1 | Information Access Helpline | (705) 755-1878 | <i>info-access@webmail.mnr.gov.on.ca</i> |

If the Information Access Helpline staff cannot provide assistance, the request will in turn be passed on to...

| Tier | Service Provider | Phone | email |
|------|--------------------------------|---------------------------|---------------------------|
| 2 | *NRVIS Support Helpline | <i>Provided by Tier-1</i> | <i>Provided by Tier-1</i> |

If NRVIS Support staff cannot provide assistance, they will consult with the Custodian, and then get back to the client.

| Tier | Service Provider | Phone | email |
|------|--------------------------|---|---|
| 3 | Dataset Custodian | <i>Contacted/provided by Tier-1 or Tier-2</i> | <i>Contacted/provided by Tier-1 or Tier-2</i> |

** Please note that Tier-2 support is intended for datasets that are maintained by the NRVIS Application. OLIW-only dataset enquiries will be fielded directly to the Custodian if assistance cannot be provided by Tier-1 support staff.*

Data Analysis Projects are supported by staff with the Ontario Ministry of Natural Resources (OMNR), Geographic Information Branch (GIB), Information Management, Policy and Standards Coordination Section. (IMPSC)

Caveat: The information within this document is relevant to the date it was produced, and may become outdated with the passage of time. The official Data Custodian for this Data Class is responsible for updating the OLID metadata record for their information holdings. The reader is encouraged to review the corresponding OLID record to obtain up-to-date information for Data Classes. The reader can access the OLID Metadata record search engine, along with additional information about OLIW itself, through this internet web link www.lio.gov.on.ca.

Background and Context

Current Status of Data Class

This section describes the current status of the Data Class/Project

Geographic Name Extent (Version 4)

Current Status: Complete, Timeline: 9/20/2006 to Unknown

Status/Analyst notes:

Target Databases: This is a NRVIS 3.3 and an OLIW 2006 Data Class

Data Class Version History

A summary of all Data Class versions.

| Version | Complexity | Version Description | NRVIS | Release | OLIW | Release | Start | Finish |
|---------|------------|----------------------------------|-------|---------|------|---------|------------|----------|
| 1 | Simple | Initial Load | X | 3.0 | X | 2.0 | 09/11/2000 | Unknown |
| 2 | Simple | Table Name and Attribute changes | X | 3.2 | X | 2.0 | 5/8/2005 | 5/8/2005 |
| 3 | Simple | Data model review | X | 3.2 | X | 2005 | 2005 | Unknown |
| 4 | Simple | Changed attribute | X | 3.3 | X | 2006 | 9/20/2006 | Unknown |

Contact Roles and Responsibilities

This section identifies the key players and their role association to this Data Class.

CUSTODIAN: Ministry of Natural Resources (MNR), Science and Information Resources Division (SIRD), Geographic Information Branch (GIB), Geographic Information Ontario, Ontario Geographic Names Board

Status: ESTABLISHED

CONTACTS AND ROLES:

Administrator, OGDE

Organization: Ministry of Natural Resources (MNR), Science and Information Resources Division (SIRD), Information Resources Management Branch (IRMB), Geographic Information Ontario Section, Ontario Geographic Names Board

Expertise:

Roles: *including status and contribution*

Distribution (Established)

Distributor/Publisher

General Contact (Established)

General information contact

Geographic Names Specialist

Organization: Ministry of Natural Resources (MNR), Science and Information Resources Division (SIRD), Information Resources Management Branch (IRMB), Geographic Information Ontario Section, Ontario Geographic Names Board

Expertise: In charge of all data management for the names board.

Roles: *including status and contribution*

Metadata (OLID) (Established)

Familiar with Canadian Geographic Names Database/Canadian Geographical Names Service and the workings of the Ontario Geographic Names Board.

Metadata

This section describes metadata about the Data Class (a.k.a. Concrete Class in NRVIS).

*Fields prefixed with an asterisk * are required by OLID for the creation of an official metadata record.*

General Information

This section provides general details about the Data Class.

Geographic Name Extent (GEONAME)

*Names and named extents for Ontario's geographic features and places.

***Business Area Acronym(s) for Data Class:**

Data Class Business Area Usage

***Use Purpose:** All officially recorded named features and places in Ontario.

Repository of geographic names information for use by government, cartographers, publishers, and any other persons engaged in the preparation of maps or other publications intended for official or public use.

***Legislative Req./Authority:**

Use Cautions:

Business Identifier(s):

Business Identifier (B.I.): CGNDB Name Identifier

B.I. Database(s): All provinces and territories within Canada among others.

B.I. Rules: Sequences automatically generated by Federal database system and each province or territory are allotted a given sequence to meet their needs.

Analysis Notes:

Data Class Vintage Details

This section provides details about the data's currency¹ within NRVIS/OLIW for this Data Class.

***Collection Start Date:**

***Collection Recent Date:** 23/09/2004

***Dataset Vintage Comments:**

***Update Frequency:** Please refer to 'Publish Function' of 'Maintenance' Section.

***Current Collection Status:** Ongoing

Data Class Geospatial Details

Details about the Data Class' geographic extent and topology rules within NRVIS/OLIW

Business Area Spatial Rules:

NRVIS/OLIW Abstract Class: SPMNTUREGION

Abstract Class Multi-Non-Tessellating-Unconstrained Region User Object. One or many regions - sharing a common object id - form a single object. Regions may be disconnected from each other. Each region is a single polygon. Regions may overlap each other. Gaps, holes, and islands are allowed. This class may be used to model habitat areas if we view all habitats as a single concrete class and if we allow disjoint areas of habitat to be considered a single object. There are no constraints as to which habitat types may overlap each other. E.g.: various habitat areas overlap other habitat areas AND disjoint summer and winter habitat areas are considered as a single object in the inventory.

***Geographic Extent:** Province

***Geographic Completeness:** .1% Complete

Zoom to Name? If 'Yes', identify the Attribute: No

Note: the following italicized entries are defaulted for a NRVIS/OLIW spatial Data Class.

***Grid or Coordinate System:** UTM

***Map Projection:** Transverse Mercator

***Horizontal Datum:** NAD83 CNT

***Horizontal Positional Accuracy:** Within 100 metres

***Vertical Datum (z-scale):** CGD28 - CDN

***Vertical Positional Accuracy:** Within 5 metres

¹ Vintage as of this document's publishing date. Please refer to the **Caveat** in this document's Preface.

Interlayer Dependency? No

Nested? No

Consolidation? No

Data Class Sources

This section provides details about the sources used to create/add data to the Data Class in NRVIS/OLIW. Fields prefixed with an asterisk () are required by OLID.*

***Canadian Geographic Names Data Base**

***Source Type/Medium:** DataLoadDefault

***Acronym(s):**

***Description:**

***Vintage/Quality:**

Geographic Extent:

Map Scale(s):

***Owner/Creator:** Natural Resources Canada

Location:

Contribution (Overall):

Comments:

The following Data Class Geographic Unit Types (GUT) are associated to this source:

CGNDB Bay (2525)

Source Contribution (to GU Type):

Compilation Rules:

Conversion Rules:

Loading Rules: Entity Codes to be loaded: 1400, 1401, 1402, 1405, 1406, 1407, 1408, 1411, 1412, 1426, 1428, 1432, 1433, 1439, 1448, 1449, 1453

Source Comments:

CGNDB Beach (2526)

Source Contribution (to GU Type):

Compilation Rules:

Conversion Rules:

Loading Rules: Entity Codes to be loaded: 1900, 1901, 1908, 1909, 1915, 1922

Source Comments:

CGNDB Cape (2530)

Source Contribution (to GU Type):

Compilation Rules:

Conversion Rules:

Loading Rules: Entity Codes to be loaded: 1600, 1601, 1602, 1603, 1604, 1605, 1606, 1608, 1624, 1627, 1628, 1629, 1642, 1647

Source Comments:

CGNDB Cave (2524)

Source Contribution (to GU Type):

Compilation Rules:

Conversion Rules:

Loading Rules: Entity Codes to be loaded: 3700, 3701

Source Comments:

CGNDB Channel (2527)

Source Contribution (to GU Type):

Compilation Rules:

Conversion Rules:

Loading Rules: Entity Codes to be loaded: 1201, 1202, 1203, 1204, 1207, 1210, 1216, 1217, 1221, 1224, 1229, 1231, 1233

Source Comments:

CGNDB City (2529)

Source Contribution (to GU Type):

Compilation Rules:

Conversion Rules:

Loading Rules: Entity codes to be loaded: 1, 15, 23

Source Comments:

CGNDB Cliff (2528)

Source Contribution (to GU Type):

Compilation Rules:

Conversion Rules:

Loading Rules: Entity Codes to be loaded: 1615, 1625, 1641, 2707, 2708, 2709, 2725

Source Comments:

CGNDB Conservation Area (1542)

Source Contribution (to GU Type):

Compilation Rules:

Conversion Rules:

Loading Rules: Entity Codes to be loaded: 516, 517, 523, 526, 536, 537, 538, 539, 541, 542, 544, 545, 547, 549, 554, 555, 556, 561, 562, 568, 574, 575, 576, 577, 579, 586, 592, 596, 4309, 4310, 4325, 5000, 5001

Source Comments:

CGNDB Falls (1530)

Source Contribution (to GU Type):

Compilation Rules:

Conversion Rules:

Loading Rules: Entity Codes to be loaded: 731, 734, 736, 766, 768

Source Comments:

CGNDB Forest (1531)

Source Contribution (to GU Type):

Compilation Rules:

Conversion Rules:

Loading Rules: Entity Codes to be loaded: 3500, 3501, 3502, 3504, 3505, 3509, 3510

Source Comments:

CGNDB Geographical Area (1532)

Source Contribution (to GU Type):

Compilation Rules:

Conversion Rules:

Loading Rules: Entity Codes to be loaded: 450, 483, 485, 486, 493, 506, 515, 5002, 5003

Source Comments:

CGNDB Hamlet (1534)

Source Contribution (to GU Type):

Compilation Rules:

Conversion Rules:

Loading Rules: Entity Codes to be loaded: 11

Source Comments:

CGNDB Indian Reserve (1535)

Source Contribution (to GU Type):

Compilation Rules:

Conversion Rules:

Loading Rules: Entity Codes to be loaded: 512, 543, 552

Source Comments:

CGNDB Island (1536)

Source Contribution (to GU Type):

Compilation Rules:

Conversion Rules:

Loading Rules: Entity Codes to be loaded: 2300, 2301, 2302, 2303, 2307, 2308, 2319, 2321, 2322, 2323, 2431

Source Comments:

CGNDB Lake (1537)

Source Contribution (to GU Type):

Compilation Rules:

Conversion Rules:

Loading Rules: Entity Codes to be loaded: 951, 952, 953, 954, 955, 957, 961, 964, 965, 970, 972, 979, 980, 984

Source Comments:

CGNDB Low Vegetation (1557)

Source Contribution (to GU Type):

Compilation Rules:

Conversion Rules:

Loading Rules: Entity Codes to be loaded: 3570, 3579, 3580, 3581, 3582, 3583, 3587, 3592, 3607, 3610

Source Comments:

CGNDB Military Area (1538)

Source Contribution (to GU Type):

Compilation Rules:

Conversion Rules:

Loading Rules: Entity Codes to be loaded: 4506, 4547, 4559, 4560, 4561, 4566, 4574, 4575, 4576

Source Comments:

CGNDB Miscellaneous (2531)

Source Contribution (to GU Type):

Compilation Rules:

Conversion Rules:

Loading Rules: Entity to be loaded: 4101, 4103, 4106, 4114, 4301, 4302, 4303, 4305, 4307, 4308, 4311, 4312, 4313, 4314, 4315, 4316, 4317, 4327, 4329, 4338, 4339, 4342, 4345, 4348, 4349, 4352, 4353, 4373, 4386, 4501, 4502, 4504, 4507, 4508, 4509, 4510, 4521, 4522, 4525,

Source Comments:

CGNDB Mountain (1539)

Source Contribution (to GU Type):

Compilation Rules:

Conversion Rules:

Loading Rules: Entity Codes to be loaded: 2700, 2701, 2702, 2703, 2705, 2706, 2710, 2711, 2712, 2715, 2721, 2723, 2726, 2742, 2743, 2749, 2752, 2766, 2767, 2803, 2805, 2818, 2860

Source Comments:

CGNDB Plain (1543)

Source Contribution (to GU Type):

Compilation Rules:

Conversion Rules:

Loading Rules: Entity Codes to be loaded: 3101, 3106, 3111, 3114

Source Comments:

CGNDB Province (1544)

Source Contribution (to GU Type):

Compilation Rules:

Conversion Rules:

Loading Rules: Entity Codes to be loaded: 491

Source Comments:

CGNDB Rapids (1545)

Source Contribution (to GU Type):

Compilation Rules:

Conversion Rules:

Loading Rules: Entity Codes to be loaded: 729, 730, 735, 750, 762, 773, 1418

Source Comments:

CGNDB River (1546)

Source Contribution (to GU Type):

Compilation Rules:

Conversion Rules:

Loading Rules: Entity Codes to be loaded: 600, 601, 602, 603, 606, 607, 610, 614, 617, 621, 630, 631, 635, 649, 708, 747

Source Comments:

CGNDB River Feature (1547)

Source Contribution (to GU Type):

Compilation Rules:

Conversion Rules:

Loading Rules: Entity Codes to be loaded: 700, 703, 704, 705, 714, 716, 717, 725, 781, 783

Source Comments:

CGNDB Shoal (1551)

Source Contribution (to GU Type):

Compilation Rules:

Conversion Rules:

Loading Rules: Entity Codes to be loaded: 2000, 2001, 2002, 2003, 2004, 2005, 2006, 2010, 2015, 2021, 2023, 2024, 2027, 2039, 2047, 2048, 2049, 2050, 2054, 2066, 2067, 2069

Source Comments:

CGNDB Spring (1552)

Source Contribution (to GU Type):

Compilation Rules:

Conversion Rules:

Loading Rules: Entity Codes to be loaded: 1150, 1151

Source Comments:

CGNDB Town (1554)

Source Contribution (to GU Type):

Compilation Rules:

Conversion Rules:

Loading Rules: Entity Codes to be loaded: 2, 9, 22

Source Comments:

CGNDB Unincorporated Place (1555)

Source Contribution (to GU Type):

Compilation Rules:

Conversion Rules:

Loading Rules: Entity Codes to be loaded: 100, 101, 102, 104, 105, 107, 108, 110, 111, 112, 113, 114, 115, 119, 120, 121, 122, 139, 141, 143, 144, 146, 147, 200, 202, 203, 206

Source Comments:

CGNDB Valley (1556)

Source Contribution (to GU Type):

Compilation Rules:**Conversion Rules:**

Loading Rules: Entity Codes to be loaded: 2901, 2903, 2904, 2906, 2907, 2908, 2911, 2913, 2918, 2939

Source Comments:**CGNDB Village (1558)**

Source Contribution (to GU Type):

Compilation Rules:**Conversion Rules:**

Loading Rules: Entity Codes to be loaded: 3, 14, 27

Source Comments:

Data Class Information Products

How the Data Class contributes to the creation of business area information products.

Canadian Geographical Name Board Report: For each extent:

Map which shows; the location of the named place with its area as defined by OGNB, and its official name. Also shows: Geographic Township (if applicable), Upper or Single Tier Municipality, Lower Tier Municipality (if applicable). Lists NTS 50 Sheet Number, Latitude, Longitude, Federal Name Identifier{Feature}, OGNB Feature Code, Federal Concise Code, Toponymic Location Comments.

For each associated Geographic Name: Geoname, Name Status Code, Federal Name ID {Name}, Geoname Language, Geoname Narrative {Name Origin}, Geoname Narrative {Name History}, Federal Data Change Date.

Note: the Decision Map and Report can be used for this; it contains this information and more.

Decision Report with Map: For each extent:

Map which shows; the location of the named place with its area as defined by OGNB and its official name. Also shows: Geographic Township (if applicable), Upper or Single Tier Municipality, Lower Tier Municipality (if applicable). Lists NTS 50 Sheet Number, UTM Sheet Number; UTM Zone UTM Easting, and UTM Northing of centroid; Latitude and Longitude of centroid, Federal Name Identifier {Feature}, OGNB Feature Code, Federal Concise Code, Toponymic Location Comments.

For each associated Geographic Name: Geoname, Name Status Code, Federal Name ID {Name}, Geoname Language, Geoname Narrative {Name Origin}, Geoname Narrative {Name History}, Decision Date, Federal Data Change Date.

Decision Report with Map as PDF: This should be viewable on the Web (and easily downloadable). Custodian should also be able to print it or email it out.

Map which shows the location of the named place or feature with its extent as defined by OGNB and its official name. Also shows: Geographic Township (if applicable), Upper or Single Tier Municipality, Lower Tier Municipality (if applicable). Lists NTS 50 Sheet Number, UTM Sheet Number; UTM Zone, UTM Easting, and UTM Northing of centroid; Latitude and Longitude of centroid, Federal Name Identifier{Feature}, OGNB Feature Code, Federal Concise Code, Toponymic Location Comments. For each associated Geographic Name: Geoname, Name Status Code, Federal Name ID {Name}, Geoname Language, Geoname Narrative {Name Origin}, Geoname Narrative {Name History}, Decision Date, Federal Data Change Date.

Geographic Names Questionnaire Map: This questionnaire is sent out when someone requests the approval of a new Geographic Name and/or a change to an existing one (including a location/extent change).

The map shows local topography (waterbodies, contours, roads, buildings, and other place names in the area). It also has a north arrow, scale bar, and inset map of Ontario with the area covered in the map highlighted. The current month and year appear in the upper left above the map.

Background to the Request is detailed in text below the map.

If a Geographic Name already exists, its extent/location and official name are displayed. Its proposed location and extent are highlighted. Proposed changes are noted in comment boxes overlaid on the map. If this is a new Geographic Name, the proposed name and its extent appear on the map.

When editing in NRVIS, the new information is put into the edit version. Once a new name or change to an existing name is approved, final edits are done, Decision Dates are entered, and the Geographic Name Extent and linked information is checked in.

Text File: This would be for all geographic names or a selected subset.

Lists: Geographic Township (if applicable), Upper or Single Tier Municipality, Lower Tier Municipality (if applicable). Lists NTS 50 Sheet Number, UTM Sheet Number; UTM Zone UTM Easting, and UTM Northing of centroid; Latitude and Longitude of centroid, Federal Name Identifier {Feature}, OGNB Feature Code, Federal Concise Code, Toponymic Location Comments.

For each associated Geographic Name: Geoname, Name Status Code, Federal Name ID {Name}, Geoname Language, Geoname Narrative {Name Origin}, Geoname Narrative {Name History}, Decision Date, Federal Data Change Date.

Data Class Maintenance Standards

This section provides details about the common data life-cycle functions and standards used to maintain this Data Class. The agency responsible for the entire process is identified in the 'Contacts' section of this document.

Collect function

Performer

Org: Provincial Georeferencing/acting as secretariat to the Ontario Geographic Names Board/Geographic Names Specialist. Naming proposals can be made on any geographic feature or unincorporated place in Ontario including those already officially named (name change proposal).

Position:

Agency Location(s): Peterborough

Frequency: Normally, as naming proposals are received from any source including government agencies, groups or individuals. Proposals can range from 1 to as many as a few hundred names.

Area of Responsibility

Type:

Name:

Procedures/Standards: Specifically the Ontario Geographic Names Board and Secretariat Procedural Guide and Ontario's Toponymic Researcher's Manual; generally A Manual for the Field Collection of Geographical Names and Guide to the Field Collection of Native Geographical Names

For the creation of French Text Equivalents both the creation methodology and the existing database of French Text Equivalents, dual and alternate name forms must be searched to ensure adherence to French language rules and to maintain the integrity of Ontario's geographic names.

Other authorities' names are assembled using the same procedures and standards used for Board approved and recommended toponymy.

Training/Expertise: Fully trained Toponymist (see Toponymist classification specifications)

Tools/Forms/Applications: Current tools include Oracle, Arcview, Microsoft Office, Internet Explorer and Real Edge (municipal name and address data) software. Applications accessed include "Digital Maps of Ontario, Canada" and many applications from within and outside the Ministry accessed through the Intranet and Internet. Toponymists use standard application forms and design questionnaire survey forms to meet particular naming requirements as required by each naming situation. Databases accessed include the Ontario Toponymic Record (manual and digital portions), various digital mapping databases at various scales, municipal address databases, telephone listings and databases accessed through the Intranet and Internet.

Q/A Performer

Org: The Geographic Names Specialist of Provincial Georeferencing, OMNR, performs primary quality assurance.

Position:

Q/A Procedures/Standards: Automated procedures are used whenever possible including using digital data and digital templates to assure quality. Quality is also ensured through survey process that leads to confirmation of or rebuttal of application and survey data.

Primary processing involves submission to and review of collected data by the Ontario Geographic Names Board. Finally, approved data is forwarded to the Geographical Names Board of Canada who check the data for accuracy and completeness against national naming and record standards

Additional Notes/Issues: Primary collection function is achieved through mail-in geographic naming applications and follow-up by name questionnaire surveys to agencies, groups and individuals who may of interest to the official naming of a geographic feature or unincorporated place. Survey formats must be designed to meet core national and provincial record-keeping standards and to provide the information against which the OGNB will apply its naming principles to render a decision on a geographic naming proposal.

The methodology: "How to create a French-Text Equivalent" is only referred to if survey findings do not indicate the existence of a suitable dual or alternate form in the French language.

Information on the origin and history of geographic feature names is not formally recommended by the OGNB or approved by the Minister. It accompanies naming submissions and is reviewed by both parties and then entered into the Toponymic Record. The Geographic Names Specialist may also enter name origin and history information into the Record without review by the OGNB or Minister as it is collected or received. Entry of this kind of information is made at the discretion of the Geographic Names Specialist in keeping with Freedom of Information and Protection of Privacy requirements.

Unofficial geographic feature names are entered into the Toponymic Record as time and resources permit. Normally, not all fields are captured and unless a naming proposal accompanies the unofficial name, there is a minimum amount of quality assurance. These names are not generally distributed.

The Secretariat receives notifications from other toponymic authorities when new names and changes are made. The Provincial Secretariat also works with the Federal Names Secretariat to ensure both have the best access to new names and changes from other authorities, i.e., the Province contacts Provincial Ministries for provincial changes and relays them to the Federal Names Secretariat and vice-versa.

Collection of "other" authorities data would not be necessary by the Board if it were available in suitable textual and GIS database formats, and if it were approved and loaded to the same rigid standards set by the Province and Federal Toponymic agencies, i.e., other authorities often approve toponyms that do not respect various language or Ontario geographic name integrity.

Information on the origin and history of place names is not formally approved by the OGNB. It accompanies naming submissions and is reviewed by the Board and then entered into the Toponymic Record. The Geographic Names Specialist may also enter name origin and history information into the Record without review by the OGNB as it is collected or received. Entry of this kind of information is made at the discretion of the Geographic Names Specialist in keeping with Freedom of Information and Protection of Privacy requirements.

Unofficial place names are entered into the Toponymic Record as time and resources permit. Normally, not all fields are captured and unless a naming proposal accompanies the unofficial name, there is a minimum amount of quality assurance. These names are not generally distributed.

The Secretariat was but is no longer staffed to acquire the missing toponymic application information required to complete the record of officially named features and places. Although many toponymic applications are self evident, there still are thousands of applications to be collected and vetted by the Ontario Geographic Names Board. Currently, only toponymic applications associated with new naming proposals are thoroughly researched and submitted to the Board for approval and entry into the record.

Assemble function

Performer

Org: Provincial Georeferencing/acting as secretariat to the Ontario Geographic Names Board/Geographic Names Specialist. Naming proposals can be made on any geographic feature or unincorporated place in Ontario including those already officially named (name change proposal).

Position:

Agency Location(s): Peterborough

Frequency: Survey results come in on a regular basis and are generally assembled for the next meeting of the Board. The Board meets three to four times a year.

Municipal data is assembled when Draft Orders are received. Other collections of changes are made as time and resources permit.

Area of Responsibility

Type:

Name:

Procedures/Standards: Specifically the Ontario Geographic Names Board and Secretariat Procedural Guide and Ontario's Toponymic Researcher's Manual; generally A Manual for the Field Collection of Geographical Names and Guide to the Field Collection of Native Geographical Names

For the creation of French Text Equivalents both the creation methodology and the existing database of French Text Equivalents, dual and alternate name forms must be searched to ensure adherence to French language rules and to maintain the integrity of Ontario's geographic names.

Other authorities' names are assembled using the same procedures and standards used for Board approved and recommended toponymy.

Training/Expertise: Fully trained Toponymist (see Toponymist classification specifications)

Tools/Forms/Applications: As new information is assembled modifications may be made to forms and the Toponymic Record. Many of the tools, applications, etc. used in the collection function are also used in the assembly function including additional mail-outs. Current tools include Oracle, Arcview, Microsoft Office, Internet Explorer and Real Edge (municipal name and address data) software. Applications accessed include "Digital Maps of Ontario, Canada" and many applications from within and outside the Ministry accessed through the Intranet and Internet. Databases accessed include the Ontario Toponymic Record (manual and digital portions), various digital mapping databases at various scales, municipal address databases, telephone listings and databases accessed through the Intranet and Internet.

Q/A Performer

Org: The Geographic Names Specialist of Provincial Georeferencing, OMNR, performs primary quality assurance.

Position:

Q/A Procedures/Standards: Automated procedures are used whenever possible including using digital data and digital templates to assure quality. Quality is also ensured through survey process that leads to confirmation of or rebuttal of application and survey data.

Additional Notes/Issues: Although much of the assembly function could be done by administrative staff, the Toponymist must monitor the data as it is collected to ensure that new issues and requirements brought up by informants are dealt with.

Frequently, the Provincial and Federal Naming Secretariats contact "other" naming authorities to correct and/or ask these authorities for information to ensure their data meets both Provincial and Federal Toponymic standards. Types of information required include: clarification on language standards, clarification on classifications especially municipal classifications often missing or ambiguous in legislation, clarification on the extent and boundaries of municipalities and administrative areas and information relating to the history and origin of the names approved for official use.

Compile function

Performer

Org: Provincial Georeferencing/acting as secretariat to the Ontario Geographic Names Board/Geographic Names Specialist. Naming proposals can be made on any geographic feature or unincorporated place in Ontario including those already officially named (name change proposal).

Position:

Agency Location(s): Peterborough

Frequency: Assembled data is compiled three to four times a year for review by the Board.

Area of Responsibility

Type:

Name:

Procedures/Standards: Specifically the Ontario Geographic Names Board and Secretariat Procedural Guide and Ontario's Toponymic Researcher's Manual; generally A Manual for the Field Collection of Geographical Names and Guide to the Field Collection of Native Geographical Names

For the creation of French Text Equivalents both the creation methodology and the existing database of French Text Equivalents, dual and alternate name forms must be searched to ensure adherence to French language rules and to maintain the integrity of Ontario's geographic names.

Other authorities' names are assembled using the same procedures and standards used for Board approved and recommended toponymy.

Training/Expertise: Fully trained Toponymist (see Toponymist classification specifications)

Tools/Forms/Applications: Current tools include Oracle, Arcview, Microsoft Office, and Internet Explorer software. Applications accessed include "Digital Maps of Ontario, Canada" and many applications from within and outside the Ministry accessed through the Intranet and Internet. Databases accessed include the Ontario Toponymic Record (manual and digital portions), various digital mapping databases at various scales, and databases accessed through the Intranet and Internet.

Q/A Performer

Org: The Geographic Names Specialist of Provincial Georeferencing, OMNR, performs primary quality assurance.

Position:

Q/A Procedures/Standards: Automated procedures are used whenever possible including using digital data and digital templates to assure quality. An executive summary spreadsheet format is used to organize survey returns and this is checked against hardcopy returns that are added to the submission packages as appendices.

Additional Notes/Issues:

Convert function

Performer

Org: Provincial Georeferencing/acting as secretariat to the Ontario Geographic Names Board/Geographic Names Specialist. Naming proposals can be made on any geographic feature or unincorporated place in Ontario including those already officially named (name change proposal).

Position:

Agency Location(s): Peterborough

Frequency: Converted data is compiled three to four times a year for review by the Board.

Area of Responsibility

Type:

Name:

Procedures/Standards: Canadian Geographical Names Data Base Records Manual modified to meet Provincial standards (see various documents; not yet compiled into a single manual)

Training/Expertise: Fully trained Toponymic Database Administrator

Tools/Forms/Applications: NRVIS 3.0

Q/A Performer

Org: The Geographic Names Specialist of Provincial Georeferencing, OMNR, performs primary quality assurance.

Position:

Q/A Procedures/Standards: Automated procedures are used almost exclusively including using digital data, digital templates and automated SQL routines to check data and to assure quality. The data is also loaded into the database with a pending status at this time that takes advantage of integrity constraint checking and adherence to database rules found within the data dictionary. Final Arcview submission layouts are checked against hardcopy documents before submissions are made to the Board.

Additional Notes/Issues:

Load function

Performer

Org: Provincial Georeferencing/acting as secretariat to the Ontario Geographic Names Board/Geographic Names Specialist. Naming proposals can be made on any geographic feature or unincorporated place in Ontario including those already officially named (name change proposal).

Position:

Agency Location(s): Peterborough

Frequency: Geographic feature and place name data is loaded three to four times a year.

French Text Equivalent name data is loaded three to four times a year.

Toponymic data from "Other agencies" and related locational data generated internally is loaded three to four times a year.

Area of Responsibility

Type:

Name:

Procedures/Standards: Standard digital scripts complete with digital checking routines are used to load the data.

Training/Expertise: Fully trained Toponymic Database Administrator

Tools/Forms/Applications: NRVIS 3.0

Q/A Performer

Org: The Ontario Geographic Names Board and Geographic Names Specialist of Provincial Georeferencing, OMNR, performs primary quality assurance.

Position:

Q/A Procedures/Standards: Automated procedures are used almost exclusively including using digital data, digital templates and automated SQL routines to check data and to assure quality. Data loaded during the Convert Function is also checked by the Ontario Geographic Names Board as part of the submission/recommendation/decision process.

Additional Notes/Issues:

Publish function

Performer

Org: Provincial Georeferencing/acting as secretariat to the Ontario Geographic Names Board/Geographic Names Specialist. Naming proposals can be made on any geographic feature or unincorporated place in Ontario including those already officially named (name change proposal).

Position:

Agency Location(s): Peterborough

Frequency: Geographic feature and place name data is loaded three to four times a year.

French Text Equivalent name data is loaded three to four times a year.

Toponymic data from other agencies and related locational data generated internally is loaded three to four times a year.

Area of Responsibility

Type:

Name:

Procedures/Standards: Standard NRVIS Interchange Format (SNIF) deliverables. As required and established by Provincial Data Warehouse.

Training/Expertise: Fully trained Toponymic Database Administrator

Tools/Forms/Applications: NRVIS 3.0

Q/A Performer

Org: The Geographic Names Specialist of Provincial Georeferencing, OMNR, performs primary quality assurance.

Position:

Q/A Procedures/Standards: Automated procedures are used almost exclusively including using digital data, digital templates and automated SQL routines to check data and to assure quality.

Additional Notes/Issues:

Warehouse Load function**Performer**

Org: Provincial Georeferencing/acting as secretariat to the Ontario Geographic Names Board/Geographic Names Specialist. Naming proposals can be made on any geographic feature or unincorporated place in Ontario including those already officially named (name change proposal).

Position:

Agency Location(s): Peterborough

Frequency: Assembled data is compiled three to four times a year for review by the Board.

French Text Equivalent name data is loaded three to four times a year.

Toponymic Database Application: Currently only hardcopy application decisions are distributed.

Area of Responsibility**Type:****Name:**

Procedures/Standards: As required and established by Provincial Data Warehouse.

Training/Expertise: As required and established by Provincial Data Warehouse.

Tools/Forms/Applications: As required and established by Provincial Data Warehouse.

Q/A Performer

Org: Provincial Georeferencing, The Geographic Names Specialist of Provincial Georeferencing, OMNR, performs primary quality assurance.

Position:

Q/A Procedures/Standards: Loaded data will be verified by Toponymic Database Administrator

Additional Notes/Issues:**Archive** function**Performer**

Org: Provincial Georeferencing/acting as secretariat to the Ontario Geographic Names Board/Geographic Names Specialist

Position:

Agency Location(s): Peterborough

Frequency: Toponymic data from other agencies and related locational data generated internally is loaded three to four times a year .i.e., after each major load.

Place name and related locational data is archived at least three to four times a year, i.e., after each major load.

French Text Equivalent name data is archived at least three to four times a year, i.e., after each major load.

Toponymic application data is archived at least three to four times a year.

Area of Responsibility**Type:****Name:**

Procedures/Standards: Oracle Dump files are created for the database at least three to four times a year. Both the Dump files (partial backup) and Oracle database (full backup) are then backed up to tape.

Arcview data is backed up on tape.

Training/Expertise: Fully trained Toponymic Database Administrator

Tools/Forms/Applications: Oracle relational database management system.

lomega backup application.

Q/A Performer

Org: The Geographic Names Specialist of Provincial Georeferencing, OMNR, performs primary quality assurance.

Position:

Q/A Procedures/Standards: Partial backups are restored from tape occasionally to ensure archive procedures are working.

Additional Notes/Issues:

Destroy function

Performer

Org: Provincial Georeferencing/acting as secretariat to the Ontario Geographic Names Board/Geographic Names Specialist. Naming proposals can be made on any geographic feature or unincorporated place in Ontario including those already officially named (name change proposal).

Position:

Agency Location(s): Peterborough

Frequency: Official and unofficial names of Ontario's geographic features are not destroyed. For example, names that have lost their official status are given an unofficial status code and kept for historical, genealogical reference, etc.

French Text Equivalents are destroyed by the Geographic Names Specialist if the official name to which they apply are rescinded. Dual and alternate official names that have lost their official status for example, are given an unofficial status code and kept for historical, genealogical reference, etc.

Area of Responsibility

Type:

Name:

Procedures/Standards: N/A

Training/Expertise: N/A

Tools/Forms/Applications: N/A

Q/A Performer

Org: N/A

Position:

Q/A Procedures/Standards: N/A

Additional Notes/Issues:

Maintenance Standards Summary

Flowchart summarizing all of the maintenance functions detailed in the previous section.

Data Class Access Standards

This section provides details about the access management to the information stored in this data class.

***OLID Record Audience:**

***Use Restrictions/Constraints:** As this data class contains names that have been deemed derogatory and/or offensive, and some names that have not yet been approved for use, a subset of this data class is required. This subset is filtered based on GEONAME_STATUS_CODE with the following codes being filtered out of the data class: A9, A10, B1, B3, B4, B5, B9, B10, B11, B12, B13, C1, C2, C3, C4, C5, C9, C10, C11, D10, M1, M2, U1, U2, U3, Y1

Due to sensitivity issues, the entire data class should only be made available on a limited basis.

Special Edit Rules: Provincial Georeferencing Unit with the Office of the Surveyor General will copy existing feature extents where possible, linking to them via an Internal Reference. If these change, the unit should be notified. Where extents do not exist, the unit will create them.

***Data Class Distribution:** NRVIS and LIDS

Sensitivity Classification

The Sensitivity Classification assigned to this Data Class by the Custodian.

Geographic Name Extent is classified as **Low**

Justification: NRVIS data set contains former official names including a few that have been deemed derogatory and/or offensive and some names that have not yet been approved for use. These types of names should not be used for general referencing purposes, and should not be widely circulated.

Governance:

Accessibility: Data will NOT be available for viewing by general public. This data class contains names that have been deemed derogatory and/or offensive, and some names that have not yet been approved for use.

Classification Authority: *Not Identified*

Sensitivity Exceptions:

Geographic Unit Type Exceptions:

CGNDB Bay *is classified as Non-Sensitive Justification:*
CGNDB Beach *is classified as Non-Sensitive Justification:*
CGNDB Cape *is classified as Non-Sensitive Justification:*
CGNDB Cave *is classified as Non-Sensitive Justification:*
CGNDB Channel *is classified as Non-Sensitive Justification:*
CGNDB City *is classified as Non-Sensitive Justification:*
CGNDB Cliff *is classified as Non-Sensitive Justification:*
CGNDB Conservation Area *is classified as Non-Sensitive Justification:*
CGNDB Falls *is classified as Non-Sensitive Justification:*
CGNDB Forest *is classified as Non-Sensitive Justification:*
CGNDB Geographical Area *is classified as Non-Sensitive Justification:*
CGNDB Hamlet *is classified as Non-Sensitive Justification:*
CGNDB Indian Reserve *is classified as Non-Sensitive Justification:*
CGNDB Island *is classified as Non-Sensitive Justification:*
CGNDB Lake *is classified as Non-Sensitive Justification:*
CGNDB Low Vegetation *is classified as Non-Sensitive Justification:*
CGNDB Military Area *is classified as Non-Sensitive Justification:*
CGNDB Miscellaneous *is classified as Non-Sensitive Justification:*
CGNDB Mountain *is classified as Non-Sensitive Justification:*
CGNDB Plain *is classified as Non-Sensitive Justification:*
CGNDB Province *is classified as Non-Sensitive Justification:*
CGNDB Rapids *is classified as Non-Sensitive Justification:*
CGNDB River *is classified as Non-Sensitive Justification:*
CGNDB River Feature *is classified as Non-Sensitive Justification:*
CGNDB Shoal *is classified as Non-Sensitive Justification:*
CGNDB Spring *is classified as Non-Sensitive Justification:*
CGNDB Town *is classified as Non-Sensitive Justification:*
CGNDB Unincorporated Place *is classified as Non-Sensitive Justification:*
CGNDB Valley *is classified as Non-Sensitive Justification:*
CGNDB Village *is classified as Non-Sensitive Justification:*

Entity Exceptions:

GEOGRAPHIC_UNIT_DESCRIPTION is classified as Non-Sensitive Justification: Business Area determined entity describes nothing sensitive.

GEOGRAPHIC_UNIT_VERIFICATION is classified as Non-Sensitive Justification: Business Area determined entity describes nothing sensitive.

SITE_ACCESS is classified as Non-Sensitive Justification: Business Area determined entity describes nothing sensitive.

ALIAS_NAME is classified as Non-Sensitive Justification: Business Area determined entity describes nothing sensitive.

JUSTIFICATION is classified as Non-Sensitive Justification: Business Area determined entity describes nothing sensitive.

SOURCE is classified as Non-Sensitive Justification: Business Area determined entity describes nothing sensitive.

SOURCE_OBSERVATION is classified as Non-Sensitive Justification: Business Area determined entity describes nothing sensitive.

EXTERNAL_REFERENCE is classified as Non-Sensitive Justification: Business Area determined entity describes nothing sensitive.

INTERNAL_REFERENCE is classified as Non-Sensitive Justification: Business Area determined entity describes nothing sensitive.

MATERIAL_REFERENCE is classified as Non-Sensitive Justification: Business Area determined entity describes nothing sensitive.

ROLE is classified as Non-Sensitive Justification: Business Area determined entity describes nothing sensitive.

GEOGRAPHIC_UNIT_COMPONENT is classified as Non-Sensitive Justification: Business Area determined entity describes nothing sensitive.

GEOGRAPHIC_UNIT_SENSITIVITY is classified as Non-Sensitive Justification: Business Area determined entity describes nothing sensitive.

GEOGRAPHIC_NAME_EXTENT is classified as Non-Sensitive Justification: Business Area determined entity describes nothing sensitive.

GEONAME_EXTENT_AND_FEATURE is classified as Non-Sensitive Justification: Business Area determined entity describes nothing sensitive.

GEOGRAPHIC_NAME is classified as Non-Sensitive Justification: Business Area determined entity describes nothing sensitive.

Geographic Extent Exceptions: None identified

Object Exceptions: None identified

LIMBS View (Warehouse interactive internet map browser)

This Section provides general information about this Data Class and its usage in IMF LIMBS Views.
 General use of this data class by other business areas in LIMBS Views is not permitted. The Custodian is not interested in creating a themed LIMBS View with this Data Class at this time.

Web Mapping Service (WMS)

Geographic Name Extent will not be available for Web Mapping Services

Web Feature Service (WFS)

Geographic Name Extent will not be available for Web Feature Services

Data Class Model

This section describes the Business and/or Design View Logical Data Model for this Data Class.

Geographic Unit Types

Identifies the Geographic Unit Types (a.k.a.GUTS) associated with this Data Class.

Geographic Unit Type Summary (sorted by status and name)

| Geographic Unit Type Name | GUT# | Status | Sensitivity |
|---------------------------|------|----------|---------------|
| CGNDB Bay | 2525 | Physical | Non-Sensitive |
| CGNDB Beach | 2526 | Physical | Non-Sensitive |
| CGNDB Cape | 2530 | Physical | Non-Sensitive |
| CGNDB Cave | 2524 | Physical | Non-Sensitive |

| Geographic Unit Type Name | GUT# | Status | Sensitivity |
|----------------------------|------|----------|---------------|
| CGNDB Channel | 2527 | Physical | Non-Sensitive |
| CGNDB City | 2529 | Physical | Non-Sensitive |
| CGNDB Cliff | 2528 | Physical | Non-Sensitive |
| CGNDB Conservation Area | 1542 | Physical | Non-Sensitive |
| CGNDB Falls | 1530 | Physical | Non-Sensitive |
| CGNDB Forest | 1531 | Physical | Non-Sensitive |
| CGNDB Geographical Area | 1532 | Physical | Non-Sensitive |
| CGNDB Hamlet | 1534 | Physical | Non-Sensitive |
| CGNDB Indian Reserve | 1535 | Physical | Non-Sensitive |
| CGNDB Island | 1536 | Physical | Non-Sensitive |
| CGNDB Lake | 1537 | Physical | Non-Sensitive |
| CGNDB Low Vegetation | 1557 | Physical | Non-Sensitive |
| CGNDB Military Area | 1538 | Physical | Non-Sensitive |
| CGNDB Miscellaneous | 2531 | Physical | Non-Sensitive |
| CGNDB Mountain | 1539 | Physical | Non-Sensitive |
| CGNDB Plain | 1543 | Physical | Non-Sensitive |
| CGNDB Province | 1544 | Physical | Non-Sensitive |
| CGNDB Rapids | 1545 | Physical | Non-Sensitive |
| CGNDB River | 1546 | Physical | Non-Sensitive |
| CGNDB River Feature | 1547 | Physical | Non-Sensitive |
| CGNDB Shoal | 1551 | Physical | Non-Sensitive |
| CGNDB Spring | 1552 | Physical | Non-Sensitive |
| CGNDB Town | 1554 | Physical | Non-Sensitive |
| CGNDB Unincorporated Place | 1555 | Physical | Non-Sensitive |
| CGNDB Valley | 1556 | Physical | Non-Sensitive |
| CGNDB Village | 1558 | Physical | Non-Sensitive |

Geographic Unit Type Details

CGNDB Bay (2525)

Description: Includes many types of shoreline water features.

Restricted Name: Topogeometnymic Feature

Restricted Description:

Analysis Notes:

Status (Status Date) and Comments: Physical (date unknown)

Sensitive? Classification and Rationale: No, classified as Non-Sensitive.

Target Databases: This is a NRVIS (Unknown) AND an OLIW (2.0) GU Type

Use Purpose:

Use Restrictions:

Security Rules:

Additional Rules:

Additional Notes:

CGNDB Beach (2526)

Description: Includes many types of low-lying shoreline features.

Restricted Name: Topogeometnymic Feature

Restricted Description:

Analysis Notes:

Status (Status Date) and Comments: Physical (date unknown)

Sensitive? Classification and Rationale: No, classified as Non-Sensitive.

Target Databases: This is a NRVIS (Unknown) AND an OLIW (2.0) GU Type

Use Purpose:

Use Restrictions:

Security Rules:

Additional Rules:

Additional Notes:

CGNDB Cape (2530)

Description: Includes many types of elevated shoreline features.

Restricted Name: Topogeometnymic Feature

Restricted Description:

Analysis Notes:

Status (Status Date) and Comments: Physical (date unknown)

Sensitive? Classification and Rationale: No, classified as Non-Sensitive.

Target Databases: This is a NRVIS (Unknown) AND an OLIW (2.0) GU Type

Use Purpose:

Use Restrictions:

Security Rules:

Additional Rules:

Additional Notes:

CGNDB Cave (2524)

Description: Includes a number of underground features.

Restricted Name: Topogeometnymic Feature

Restricted Description:

Analysis Notes:

Status (Status Date) and Comments: Physical (date unknown)

Sensitive? Classification and Rationale: No, classified as Non-Sensitive.

Target Databases: This is a NRVIS (Unknown) AND an OLIW (2.0) GU Type

Use Purpose:

Use Restrictions:

Security Rules:

Additional Rules:

Additional Notes:

CGNDB Channel (2527)

Description: Includes many types of standing water connecting two or more bodies of water.

Restricted Name: Topogeometnymic Feature

Restricted Description:

Analysis Notes:

Status (Status Date) and Comments: Physical (date unknown)

Sensitive? Classification and Rationale: No, classified as Non-Sensitive.

Target Databases: This is a NRVIS (Unknown) AND an OLIW (2.0) GU Type

Use Purpose:

Use Restrictions:

Security Rules:

Additional Rules:

Additional Notes:

CGNDB City (2529)

Description: A populated place with legally defined boundaries, incorporated under the provincial Municipal act.

Restricted Name: Topogeometnymic Feature

Restricted Description:

Analysis Notes:

Status (Status Date) and Comments: Physical (date unknown)

Sensitive? Classification and Rationale: No, classified as Non-Sensitive.

Target Databases: This is a NRVIS (Unknown) AND an OLIW (2.0) GU Type

Use Purpose:

Use Restrictions:

Security Rules:

Additional Rules:

Additional Notes:

CGNDB Cliff (2528)

Description: Includes a number of specific elevated shoreline features.

Restricted Name: Topogeometnymic Feature

Restricted Description:

Analysis Notes:

Status (Status Date) and Comments: Physical (date unknown)

Sensitive? Classification and Rationale: No, classified as Non-Sensitive.

Target Databases: This is a NRVIS (Unknown) AND an OLIW (2.0) GU Type

Use Purpose:

Use Restrictions:

Security Rules:

Additional Rules:

Additional Notes:

CGNDB Conservation Area (1542)

Description: Includes many types of park or reserve administrative areas such as provincial or federal parks.

Restricted Name:

Restricted Description:

Analysis Notes: Analysis Notes

Status (Status Date) and Comments: Physical (date unknown)

Sensitive? Classification and Rationale: No, classified as Non-Sensitive.

Target Databases: This is a NRVIS (Unknown) AND an OLIW (2.0) GU Type

Use Purpose:

Use Restrictions:

Security Rules:

Additional Rules:

Additional Notes:

CGNDB Falls (1530)

Description: Includes a specific set of features or flowing water.

Restricted Name:

Restricted Description:

Analysis Notes: Analysis Notes

Status (Status Date) and Comments: Physical (date unknown)

Sensitive? Classification and Rationale: No, classified as Non-Sensitive.

Target Databases: This is a NRVIS (Unknown) AND an OLIW (2.0) GU Type

Use Purpose:

Use Restrictions:

Security Rules:

Additional Rules:

Additional Notes:

CGNDB Forest (1531)

Description: Includes many types of forested area features.

Restricted Name:

Restricted Description:

Analysis Notes: Analysis Notes

Status (Status Date) and Comments: Physical (date unknown)

Sensitive? Classification and Rationale: No, classified as Non-Sensitive.

Target Databases: This is a NRVIS (Unknown) AND an OLIW (2.0) GU Type

Use Purpose:

Use Restrictions:

Security Rules:

Additional Rules:

Additional Notes:

CGNDB Geographical Area (1532)

Description: Includes many types of geographic administrative areas such as geographic townships or geographic districts.

Restricted Name:

Restricted Description:

Analysis Notes: Analysis Notes

Status (Status Date) and Comments: Physical (date unknown)

Sensitive? Classification and Rationale: No, classified as Non-Sensitive.

Target Databases: This is a NRVIS (Unknown) AND an OLIW (2.0) GU Type

Use Purpose:

Use Restrictions:

Security Rules:

Additional Rules:

Additional Notes:

CGNDB Hamlet (1534)

Description: Includes a number of types of incorporated populated places with legally defined boundaries.

Restricted Name:

Restricted Description:

Analysis Notes: Analysis Notes

Status (Status Date) and Comments: Physical (date unknown)

Sensitive? Classification and Rationale: No, classified as Non-Sensitive.

Target Databases: This is a NRVIS (Unknown) AND an OLIW (2.0) GU Type

Use Purpose:

Use Restrictions:

Security Rules:

Additional Rules:

Additional Notes:

CGNDB Indian Reserve (1535)

Description: Tract of land set apart for the use and benefit of a particular Indian band.

Restricted Name:

Restricted Description:

Analysis Notes: Analysis Notes

Status (Status Date) and Comments: Physical (date unknown)

Sensitive? Classification and Rationale: No, classified as Non-Sensitive.

Target Databases: This is a NRVIS (Unknown) AND an OLIW (2.0) GU Type

Use Purpose:

Use Restrictions:

Security Rules:

Additional Rules:

Additional Notes:

CGNDB Island (1536)

Description: Includes many types of terrain features surrounded by water.

Restricted Name:

Restricted Description:

Analysis Notes: Analysis Notes

Status (Status Date) and Comments: Physical (date unknown)

Sensitive? Classification and Rationale: No, classified as Non-Sensitive.

Target Databases: This is a NRVIS (Unknown) AND an OLIW (2.0) GU Type

Use Purpose:

Use Restrictions:

Security Rules:

Additional Rules:

Additional Notes:

CGNDB Lake (1537)

Description: Includes many types of standing water surrounded by land.

Restricted Name:

Restricted Description:

Analysis Notes: Analysis Notes

Status (Status Date) and Comments: Physical (date unknown)

Sensitive? Classification and Rationale: No, classified as Non-Sensitive.

Target Databases: This is a NRVIS (Unknown) AND an OLIW (2.0) GU Type

Use Purpose:

Use Restrictions:

Security Rules:

Additional Rules:

Additional Notes:

CGNDB Low Vegetation (1557)

Description: Includes many types of open areas with low vegetation such as meadows or marshes.

Restricted Name:

Restricted Description:

Analysis Notes: Analysis Notes

Status (Status Date) and Comments: Physical (date unknown)

Sensitive? Classification and Rationale: No, classified as Non-Sensitive.

Target Databases: This is a NRVIS (Unknown) AND an OLIW (2.0) GU Type

Use Purpose:

Use Restrictions:

Security Rules:

Additional Rules:

Additional Notes:

CGNDB Military Area (1538)

Description: Place which serves as a permanent location for housing, equipment, and other facilities used by the armed forces.

Restricted Name:

Restricted Description:

Analysis Notes: Analysis Notes

Status (Status Date) and Comments: Physical (date unknown)

Sensitive? Classification and Rationale: No, classified as Non-Sensitive.

Target Databases: This is a NRVIS (Unknown) AND an OLIW (2.0) GU Type

Use Purpose:

Use Restrictions:

Security Rules:

Additional Rules:

Additional Notes:

CGNDB Miscellaneous (2531)

Description: Features that have not been placed or classified into a category.

Restricted Name: Topogeometric Feature

Restricted Description:

Analysis Notes: Analysis Notes

Status (Status Date) and Comments: Physical (date unknown)

Sensitive? Classification and Rationale: No, classified as Non-Sensitive.

Target Databases: This is a NRVIS (Unknown) AND an OLIW (2.0) GU Type

Use Purpose:

Use Restrictions:

Security Rules:

Additional Rules:

Additional Notes:

CGNDB Mountain (1539)

Description: Includes many types of elevated terrain features.

Restricted Name:

Restricted Description:

Analysis Notes: Analysis Notes

Status (Status Date) and Comments: Physical (date unknown)

Sensitive? Classification and Rationale: No, classified as Non-Sensitive.

Target Databases: This is a NRVIS (Unknown) AND an OLIW (2.0) GU Type

Use Purpose:

Use Restrictions:

Security Rules:

Additional Rules:

Additional Notes:

CGNDB Plain (1543)

Description: Includes many types of flat terrain features.

Restricted Name:

Restricted Description:

Analysis Notes: Analysis Notes

Status (Status Date) and Comments: Physical (date unknown)

Sensitive? Classification and Rationale: No, classified as Non-Sensitive.

Target Databases: This is a NRVIS (Unknown) AND an OLIW (2.0) GU Type

Use Purpose:

Use Restrictions:

Security Rules:

Additional Rules:

Additional Notes:

CGNDB Province (1544)

Description: Political and geographical division of the country.

Restricted Name:

Restricted Description:

Analysis Notes: Analysis Notes

Status (Status Date) and Comments: Physical (date unknown)

Sensitive? Classification and Rationale: No, classified as Non-Sensitive.

Target Databases: This is a NRVIS (Unknown) AND an OLIW (2.0) GU Type

Use Purpose:

Use Restrictions:

Security Rules:

Additional Rules:

Additional Notes:

CGNDB Rapids (1545)

Description: Includes a specific set of features on flowing water such as rapids.

Restricted Name:

Restricted Description:

Analysis Notes: Analysis Notes

Status (Status Date) and Comments: Physical (date unknown)

Sensitive? Classification and Rationale: No, classified as Non-Sensitive.

Target Databases: This is a NRVIS (Unknown) AND an OLIW (2.0) GU Type

Use Purpose:

Use Restrictions:

Security Rules:

Additional Rules:

Additional Notes:

CGNDB River (1546)

Description: Includes many types of flowing freshwater features.

Restricted Name:

Restricted Description:

Analysis Notes: Analysis Notes

Status (Status Date) and Comments: Physical (date unknown)

Sensitive? Classification and Rationale: No, classified as Non-Sensitive.

Target Databases: This is a NRVIS (Unknown) AND an OLIW (2.0) GU Type

Use Purpose:

Use Restrictions:

Security Rules:

Additional Rules:

Additional Notes:

CGNDB River Feature (1547)

Description: Includes many types of features found on flowing water such as bends and holes.

Restricted Name:

Restricted Description:

Analysis Notes: Analysis Notes

Status (Status Date) and Comments: Physical (date unknown)

Sensitive? Classification and Rationale: No, classified as Non-Sensitive.

Target Databases: This is a NRVIS (Unknown) AND an OLIW (2.0) GU Type

Use Purpose:

Use Restrictions:

Security Rules:

Additional Rules:

Additional Notes:

CGNDB Shoal (1551)

Description: Includes many types of underwater features.

Restricted Name:

Restricted Description:

Analysis Notes: Analysis Notes

Status (Status Date) and Comments: Physical (date unknown)

Sensitive? Classification and Rationale: No, classified as Non-Sensitive.

Target Databases: This is a NRVIS (Unknown) AND an OLIW (2.0) GU Type

Use Purpose:

Use Restrictions:

Security Rules:

Additional Rules:

Additional Notes:

CGNDB Spring (1552)

Description: Includes a number of types of water sources.

Restricted Name:

Restricted Description:

Analysis Notes: Analysis Notes

Status (Status Date) and Comments: Physical (date unknown)

Sensitive? Classification and Rationale: No, classified as Non-Sensitive.

Target Databases: This is a NRVIS (Unknown) AND an OLIW (2.0) GU Type

Use Purpose:

Use Restrictions:

Security Rules:

Additional Rules:

Additional Notes:

CGNDB Town (1554)

Description: Includes a number of specific types of incorporated populated places.

Restricted Name:

Restricted Description:

Analysis Notes: Analysis Notes

Status (Status Date) and Comments: Physical (date unknown)

Sensitive? Classification and Rationale: No, classified as Non-Sensitive.

Target Databases: This is a NRVIS (Unknown) AND an OLIW (2.0) GU Type

Use Purpose:

Use Restrictions:

Security Rules:

Additional Rules:

Additional Notes:

CGNDB Unincorporated Place (1555)

Description: Includes many types of populated and unpopulated unincorporated places such as communities and localities.

Restricted Name:

Restricted Description:

Analysis Notes: Analysis Notes

Status (Status Date) and Comments: Physical (date unknown)

Sensitive? Classification and Rationale: No, classified as Non-Sensitive.

Target Databases: This is a NRVIS (Unknown) AND an OLIW (2.0) GU Type

Use Purpose:

Use Restrictions:

Security Rules:

Additional Rules:

Additional Notes:

CGNDB Valley (1556)

Description: Includes many types of depression features.

Restricted Name:

Restricted Description:

Analysis Notes: Analysis Notes

Status (Status Date) and Comments: Physical (date unknown)

Sensitive? Classification and Rationale: No, classified as Non-Sensitive.

Target Databases: This is a NRVIS (Unknown) AND an OLIW (2.0) GU Type

Use Purpose:

Use Restrictions:

Security Rules:

Additional Rules:

Additional Notes:

CGNDB Village (1558)

Description: Includes a number of specific types of incorporated places.

Restricted Name:

Restricted Description:

Analysis Notes: Analysis Notes

Status (Status Date) and Comments: Physical (date unknown)

Sensitive? Classification and Rationale: No, classified as Non-Sensitive.

Target Databases: This is a NRVIS (Unknown) AND an OLIW (2.0) GU Type

Use Purpose:

Use Restrictions:

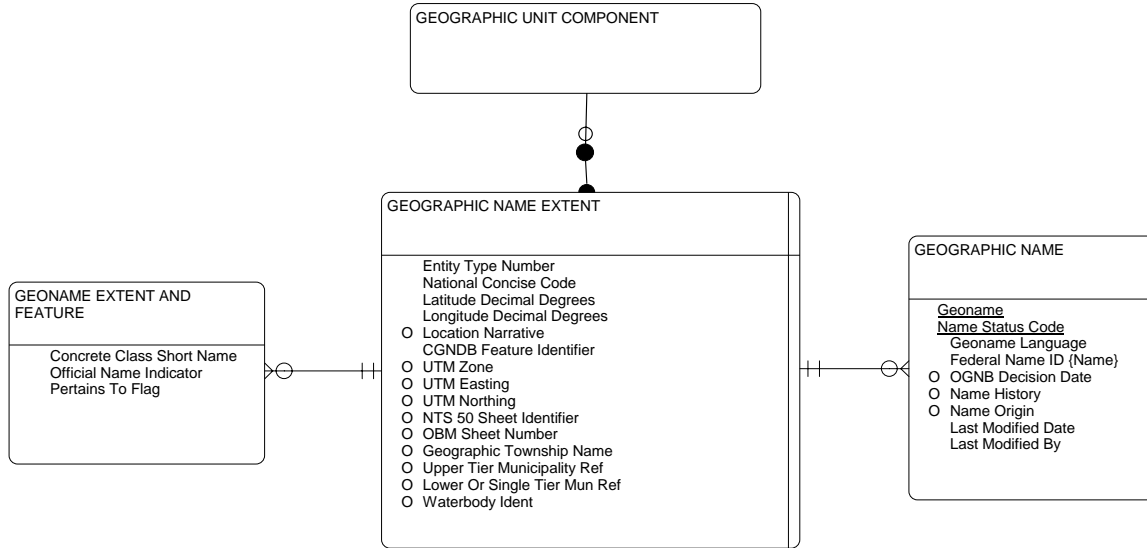
Security Rules:

Additional Rules:

Additional Notes:

Logical Data Model (Business View)

Refer to the Appendix 1 guide on how to read an Entity Relationship Diagram (ERD).



Data Dictionary

Refer to the Appendix 2 for guide on how to interpret a data dictionary.

Entity: GEOGRAPHIC NAME

Description:

A name applied to a geographic feature. It is the proper name, specific term, or expression by which a particular geographic entity is, or was, known. A geographic entity is any relatively permanent part of the natural or manmade landscape or seascape that has recognizable identity within a particular cultural context. A geographic name, then, may refer to any place, feature, or area on the Earth's surface, or to a related group of similar places, features, or areas.

Geoname Character (variable length string) 100 Mandatory
Feature and place names, includes unofficial names. Linked to Ontario Toponymic Database, e.g. Lake Ontario.

This corresponds to the GEONAME in the Canadian Geographic Name System for the Canadian Geographic Name Data Base.

Class: Name

Name Status Code Character (variable length string) 3 Mandatory
A code that indicates the status of a name, e.g. A1 = Official, B1 = Unofficial.

Class: Code

Valid values in NRVIS_NAME_STATUS_TYPE

Geoname Language Character 15 Mandatory
The formally recognized dialect from which the geographic name is taken.

Class: Name

Permissible Values:

Cayuga
Cree
Delaware
English
French
Mohawk
Ogoji-Cree
Ojibwa
Oneida
Onondaga
Seneca
Tuscarora

Name (Synonym)

Corresponds to "Source Name Key". To uniquely identify a name for a feature, where a feature can have more than one name.

Federal Name ID Character (variable length string) 5 Mandatory
A unique key or identifier for a name (a national standard) as in the Ontario Toponymic Database.

This corresponds to the CGNDB_KEY in the Canadian Geographic Name System for the Canadian Geographic Name Data Base. It is a mandatory field that must be supplied to them.

Class: Identifier

OGNB Decision Date Date Optional
Date the name was approved for official use.

Class: Character Date

Name History Character (variable length string) 2000 Optional
Free-form text describing the history of a name stored in the Ontario Geographic Names Data Base, such as why a name may have been approved or why a name may have been changed or why a name may have been rejected.

This corresponds to part of the NAME_NARRATIVE in the Canadian Geographic Name System for the Canadian Geographic Name Data Base. It is an optional field. When supplied to them, the contents of Name History and Name Origin should be combined.

Class: Description

Name Origin Character (variable length string) 2000 Optional
Free-form text describing the meaning or derivation of a name stored in the Ontario Geographic Names Data Base.

This corresponds to part of the NAME_NARRATIVE in the Canadian Geographic Name System for the Canadian Geographic Name Data Base. It is an optional field. When supplied to them, the contents of Name History and Name Origin should be combined.

Class: Description

Last Modified Date Date Mandatory
Date of most recent change or correction to data in a record. Initial entry of the record is viewed as its first change (since it did not exist before). This corresponds to the LAST_MODIFIED_DATE in the Canadian Geographic Name System for the Canadian Geographic Name Data Base.

Class: Date

Last Modified By Date Mandatory
Name of the user who made the last change to data in the geographic name record. Initial entry of the record is viewed as its first change (since it did not exist before). This corresponds to the LAST_MODIFIED_BY in the Canadian Geographic Name System for the Canadian Geographic Name Data Base.

Class: Date

Each GEOGRAPHIC NAME Must be One and only one GEOGRAPHIC NAME EXTENT(s). Exclusive:

Entity: GEOGRAPHIC NAME EXTENT

Description:

The site and extent of the location or portion of the earth's surface to which a geographic name applies.

Note: if this is an Identified Waterbody, there may be only the Waterbody Identifier and no officially recognized names.

Entity Type Number Numeric 4 0 Mandatory
A code linked to the National table identifying a feature or place type, e.g. lake = 951.

Class: Code

National Concise Code Character (variable length string) 4 Mandatory
 The federal grouping of feature types delineated in Entity Codes. Each grouping will be a Geographic Unit Type (GUT) in the Ontario spatial database.

Class: Code

Valid values found in NRVIS_CGNDB_CONCISE_CODE.

Latitude Decimal Degrees Numeric 10 7 Mandatory
 The latitude in decimal degrees. For example: 79.1234567

Class: Measurement

Longitude Decimal Degrees Numeric 10 7 Mandatory
 The longitude in decimal degrees. For example: 80.1234567

Class: Measurement

Location Narrative Character 2000 Optional
 The location narrative is a description of the location of a geographical feature or place. Only official names are to be used in this field, except "B2" Rescinded Names.

Class: Description

CGNDB Feature Identifier Character (variable length string) 5 Mandatory
 A unique key or identifier for a name (a federal standard) as in the Ontario Toponymic Database.

This corresponds to the CGNDB_KEY in the Canadian Geographic Name System for the Canadian Geographic Name Data Base. It is a mandatory field that must be supplied to them.

Class: Identifier

UTM Zone Numeric 2 Optional
 A geographic reference zone within the province. Ontario is divided into 4 UTM zones.

Class: Code

UTM Easting Numeric 9 3 Optional
 The distance, in metres, from the central meridian of the zone. The central meridian receives a false easting of 500,000 metres.

Class: Measurement

UTM Northing Numeric 10 3 Optional
 The distance, in metres, from the equator.

Class: Measurement

NTS 50 Sheet Identifier Character (variable length string) 6 Optional
 A alpha-numeric code assigned to uniquely identify a grid cell at a scale of 1 : 50 000. i.e. 052G01

Class : Name

NTS_50_MAP_NUMBER

Based on recent correspondence and consensus (K. Gurnett - 2005), data item property has been changed from 13 characters to 6. (NTS Map Identifier will not exceed 6 characters)

OBM Sheet Number Character (variable length string) 16 Optional
Text identifier of an OBM map sheet. This is the form as it appears on OBM planimetric maps.

It is concatenated as follows: ScaleThousands (2 digit) +1 blank +UTM Zone (2 digit) +1 blank + Easting (4 digit) + 1 blank + Northing (5 digits). Example: "20 16 6000 54000".

Class: Business Identifier

Geographic Township Name Character (variable length string) 100 Optional
The official name of the geographic township.

Class: Name

Valid values found in "Geog_twps_improved" table.

Upper Tier Municipality Ref Character (variable length string) 100 Optional
The Upper Tier Municipality in which the centroid or mouth of a named feature or place is located.

Class: Name

Lower Or Single Tier Mun Ref Character (variable length string) 100 Optional
The Lower Tier or Single Tier Municipality in which the centroid or mouth of a named feature or place is located.

Class: Name

Waterbody Ident Character (variable length string) 16 Optional
Unique waterbody identifier (ZZ-EEE-NNNNN) based on UTM of centroid and 1927 datum.

Class: Identifier

Subtype Of GEOGRAPHIC UNIT COMPONENT

Each GEOGRAPHIC NAME EXTENT May be One or more GEOGRAPHIC NAME(s). Exclusive:

Each GEOGRAPHIC NAME EXTENT May be One or more GEONAME EXTENT AND FEATURE(s). Exclusive:

Entity: GEOGRAPHIC UNIT COMPONENT

Description:

A Geographic Unit that may be included in a Geographic Unit Consolidation.

Location Accuracy Character (variable length string) 25 Mandatory
The degree of conformity or closeness of a measurement within the database to its true value in the world.

Class: Description

Valid values in NRVIS_LOCATION_ACCURACY.

Entity: GEONAME EXTENT AND FEATURE**Description:**

The use of a Geographic Name as defined by the Ontario Geographic Names Board by a feature. This name will be the source for the feature's Official Name. Parts of the feature may also have Geographic Names which should appear on cartographic products.

Note: this intersection table is written to by NRVIS system based upon name approval.

| | | | |
|---|------------------------------------|----|-----------|
| <u>Concrete Class Short Name</u> | Character (variable length string) | 12 | Mandatory |
| Static short name used to uniquely identify a Concrete Class. | | | |

Class: Name

| | | | |
|---|------------------------------------|---|-----------|
| <u>Official Name Indicator</u> | Character (variable length string) | 3 | Mandatory |
| Indication of whether this is the official, local or common name. | | | |

Class: Indicator**Permissible Values:**

'Yes','No'

| | | | |
|--|------------------------------------|---|-----------|
| <u>Pertains To Flag</u> | Character (variable length string) | 4 | Mandatory |
| Indicates whether the Geographic Name pertains to the full feature or to part of it. | | | |

Class:**Permissible Values:**

"Full","Part"

Each GEONAME EXTENT AND FEATURE Must be One and only one GEOGRAPHIC NAME EXTENT(s). Exclusive:

Lookup Table Index

Lookup table definitions and values referenced by Data Class attributes in this document. (Refer to Data Dictionary)

Note: Lookup tables with 200+ records will not have their values listed in order to conserve space. A complete listing of values for these tables can be obtained by contacting the OLIV Help Desk. (Refer to document's Preface.)

Lookup Tables with 2-3 Business-Defined Columns

| Table Name: CGNDB_CONCISE_CODE | | | | |
|--------------------------------|------|---|-------------|-------------|
| Properties | | | | |
| Field Name | Type | Size | Class | Description |
| CGNDB_CONCISE_CODE | Text | 4 | Primary Key | |
| CGNDB_CONCISE_NAME | Text | 100 | Description | |
| CGNDB_CONCISE_CODE | | CGNDB_CONCISE_NAME | | Expired? |
| BAY | | Bay | | |
| BCH | | Beach | | |
| CAPE | | Cape | | |
| CAVE | | Cave | | |
| CHAN | | Channel | | |
| CITY | | City | | |
| CLF | | Cliff | | |
| FALL | | Falls | | |
| FOR | | Forest | | |
| GEOG | | Geographical Area | | |
| HAM | | Hamlet | | |
| IR | | Indian Reserve | | |
| ISL | | Island | | |
| LAKE | | Lake | | |
| MIL | | Military Area | | |
| MISC | | Miscellaneous | | |
| MTN | | Mountain | | |
| MUN1 | | Other municipal/district area - major agglomeration | | |
| MUN2 | | Other municipal/district area - miscellaneous | | |
| PARK | | Conservation area | | |
| PLN | | Plain | | |
| PROV | | Province | | |
| RAP | | Rapids | | |
| RIV | | River | | |
| RIVF | | River Feature | | |
| SHL | | Shoal | | |
| SPRG | | Spring | | |
| TOWN | | Town | | |
| UNP | | Unincorporated place | | |
| VALL | | Valley | | |
| VEGL | | Low Vegetation | | |
| VILG | | Village | | |

| Table Name: GEONAME_ENTITY_TYPE | | | | |
|--|--------------------------|----------------------|-------------|-------------|
| Properties | | | | |
| Field Name | Type | Size | Class | Description |
| GEONAME_ENTITY_TYPE_CODE | Numeric, Integer | 2 | Primary Key | |
| GEONAME_ENTITY_TYPE_NAME | Text | 100 | Description | |
| FEDERAL_CONCISE_CODE | Text | 10 | | |
| GEONAME_ENTITY_TYPE_CODE | GEONAME_ENTITY_TYPE_NAME | FEDERAL_CONCISE_CODE | Expired? | |
| <i>There are 1180 values in this lookup table. To conserve space, they will not be listed.</i> | | | | |

| Table Name: NAME_STATUS_TYPE | | | | |
|------------------------------|--|---|-------------|-------------|
| Properties | | | | |
| Field Name | Type | Size | Class | Description |
| NAME_STATUS_CODE | Text | 3 | Primary Key | |
| NAME_TITLE | Text | 75 | Description | |
| NAME_DESCR_USES | Memo | 0 | | |
| NAME_STATUS_CODE | NAME_TITLE | NAME_DESCR_USES | Expired? | |
| A1 | Approved | Name officially approved or established by legislation. | | |
| A11 | Name confirmed but with administrative/cadastral | An approved name that has new Administration Location 1 and/or Administration Location 2 information, resulting from redesignation of legal | | |

| NAME_STATUS_CODE | NAME_TITLE | NAME_DESCR_USES | Expired? |
|------------------|------------------------------|---|----------|
| | | boundaries. Only known instances are in Ontario and Nova Scotia. | |
| A12 | Dominant name | Name with another officially recognized form that is of unequal status (unlike "dual names" (A7), which are equal in status at a federal level). | |
| A13 | Indian Reserve Name | A single record now being used instead of two separate records in English and French. Until the conversion is complete, Indian Reserve records may still be recorded as A7 status names and be in two separate records. | |
| A2 | Altered Application | Any change in the application while still retaining the name (e.g. change in coordinates, boundary, extent, or headwaters). Should not be used for changes in location description. Some boundary changes may not result in an actual change of coordinates but are still recorded as Altered Applications. | |
| A3 | Dual Approved | Names which require the approval of two or more names authorities. Used for names of geographical features given joint approval on federal lands or for features crossing a provincial or territorial boundary. Name is the same in both jurisdictions. | |
| A4 | Change in the Form of a Name | Official change to the spelling, generic or possessives. (The name a short distance alphabetically, e.g., from Aba... to Abl..., but some judgment may be needed. Check the printed gazetteer to see how far the move is. Larger moves should be treated as A8, e.g., from Am..., to Az..) Also, used to indicate the changes made to populated place/administration area generics. | |
| A5 | Reinstatement | Re-approval of an official name that had been rescinded or deleted. | |
| A6 | Confirmation | An approved name which has been questioned and has been reaffirmed in the approved form. Also, used to confirm legislation establishing municipalities, parks, etc. It is used, also, for the second and subsequent approvals of the same name, especially in older records that can have several adoption dates on different maps. It should not be used to adopt old, established names that have not been adopted before; use A1 then. | |
| A7 | Dual Name | Two names officially approved for the feature. Used mostly for federal records (Indian Reserves, DND facilities, national parks [including national marine parks and national historic sites]) which have English and French versions. (Both names have equal status for federal purpose) Also used when two jurisdictions approve different names for the same feature, e.g., Mount Caubvick (Newfoundland) and Mont D'Iberville (Quebec). | |
| A8 | Name Change | A name which takes the place of a formerly approved name, other than a 'Change in the form of Name' (A4). | |
| B1 | Not Name | Unapproved alternate names and cross-reference names to approved and formerly approved names, (A- | |

| NAME_STATUS_CODE | NAME_TITLE | NAME_DESCR_USES | Expired? |
|------------------|--|---|----------|
| | | status and B2-status names mostly). | |
| B13 | Information | Toponym that will not be made official for various reasons. | |
| B2 | Rescinded Name | A name that has had its official recognition removed and for which a new name has not been adopted. Should a new name be adopted at this location, the B2 name will then change to B4 status. | |
| B3 | Deleted name | A name that has never been approved but inadvertently has appeared on a map, in a gazetteer, or in an Indian Reserve Schedule and is to be removed. Also used for the former names and variants in the spelling of the names of national parks and DND facilities. | |
| B4 | Gazetteer Cross-reference | A name that has had its official recognition removed and for which a new name has been adopted. | |
| B5 | Former Indian Reserve Name | An Indian Reserve name that has been changed. | |
| C1 | Not Approved | A name officially recognized (with a decision date) as not to be adopted and not to be listed in gazetteers. | |
| C10 | Toponym likely to become official | Toponym, which has received a favourable notice and will likely, be approved in the future. | |
| C2 | Pending Investigation | A submitted name, for which a decision has been (temporarily) deferred. | |
| C3 | Proposed Name | A name in the submission stage. | |
| C4 | For Record Only | An unofficial name (this category can include cross-references to Not Approved C1 names, names so designated on decision lists, and C category names where record information is incomplete). This category may include some names once approved, but which are not now used or recognized by a particular jurisdiction. | |
| C5 | Name Requiring Dual Approval | A name approved by one names authority and waiting approval by another. | |
| D35 | Ontario Digital Information | Information received digitally from Ontario that has not yet been processed. | |
| P1 | Approved Pan-Canadian Name | A name of pan-Canadian significance as identified in Treasury Board Circular 1983-58. These include well-known geographic features. Names of provinces and territories and names already approved by particular jurisdictions are not included in this category, e.g., S1 status names. | |
| Q1 | Ontario Approved French Alternate Name | Name confirmed as well established, in current local or common usage, officially recommended by the OGNB and approved by the Minister of Natural Resources as "alternate" in status to an official name. | |
| Q2 | Ontario French-text Equivalent Name | Means a translation or an adaptation into the French language of an official name, which is provided by the Provincial Referencing Unit of the Ministry of Natural Resources. These equivalents are not supported by local usage and do not require ministerial approval. They are to be used for specific purposes outlined in the policy: "Linguistic Treatment of French Geographical Names in Ontario - Principles and Procedures". | |
| Q3 | Ontario Approved Indigenous Alternate Name | See Q1 definition - To date, Ontario has no Q3 status names. | |

| NAME_STATUS_CODE | NAME_TITLE | NAME_DESCR_USES | Expired? |
|------------------|--|---|----------|
| S1 | Approved Statutory name | Provincial or territorial name in the official English or French form, as approved by appropriate legislation. | |
| U1 | Used in special circumstances - urban names | Used for urban names in Ottawa-Carleton (Ontario) only. Only the current name will be given a U1 coding. Older names, former names, and variants will have C4 status. | |
| U2 | Used in special circumstances - parks and related entities | Used for parks or related entities for which the legislation information may not be easily or readily available. The names, however, are in good standing. These entities are not, usually, under the jurisdiction of a provincial or territorial names authority. Includes certain federal records. A complete list of such names may not be available. Only the "current" name will be given a U2 coding. Older names and variants will have C4 status. | |
| U3 | Used in special circumstances - conservation areas | Used for conservation areas (in Ontario, for now) that have appeared on maps in the past. These entities are not, usually, under the jurisdiction of a provincial or territorial names authority. A complete list of such names may not be available. Only the "current" name will be given a U3 coding. Older names and variants will have C4 status. | |
| U4 | Used in special circumstances- corporate/legal names of populated places | Full legal name of an incorporated place, e.g., The Corporation of the City of Kawartha Lakes. | |
| W1 | Approved International Waters Name (adjacent to Canada) | The name of a water body adjacent to the Canadian coast; in English or in French; excluding pan-Canadian names; not approved by any particular jurisdiction; and in keeping with CPCGN "Guidelines for names Outside Canada for Official Canadian Use", 1982 (principles and Procedures for Geographical naming 1990, Appendix 1). | |

Table Name: OGNB_FEATURE
Properties

| Field Name | Type | Size | Class | Description |
|--------------------------|-----------------|------|-------------|-------------|
| GEONAME_ENTITY_TYPE_CODE | Numeric,Integer | 2 | Primary Key | |
| GEONAME_ENTITY_TYPE_NAME | Text | 100 | Description | |
| FEDERAL_CONCISE_CODE | Text | 10 | | |

| GEONAME_ENTITY_TYPE_CODE | GEONAME_ENTITY_TYPE_NAME | FEDERAL_CONCISE_CODE | Expired? |
|---|--------------------------|----------------------|----------|
| <i>There are 313 values in this lookup table. To conserve space, they will not be listed.</i> | | | |

Table Name: PREFERRED_LANGUAGE
Properties

| Field Name | Type | Size | Class | Description |
|-------------------------|------|------|-------------|-------------|
| PREFERRED_LANGUAGE_CODE | Text | 1 | Primary Key | |
| PREFERRED_LANG_DESCR | Text | 10 | Description | |

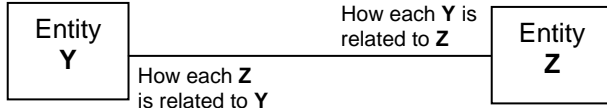
| PREFERRED_LANGUAGE_CODE | PREFERRED_LANG_DESCR | Expired? |
|-------------------------|----------------------|----------|
| E | English | |
| F | French | |
| O | Ogoji-Cree | |

Appendix 1: Reading an Entity-Relationship Diagram

A modeler can define the data needs of a business using an **entity relationship diagram** (ERD). An ERD is a schematic representation showing entities and their relationship to other entities. An **entity** is a data object and a **relationship** is a model of the association between objects of one or more different entities. In an ERD, entities are rectangles connected to other entities by relationship lines. (official definition excerpt from the *Information Modeling Handbook for the OPS – Ontario Government Management Board Secretariat Corporate Architecture Branch*)

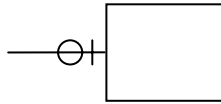
You will encounter the following symbology in an ERD.

General Notation: Text that describes a relationship between entities.

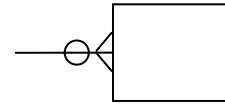


Relationship Cardinality Symbols:

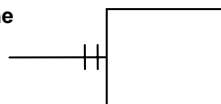
There *may* be **zero or one** occurrence of this entity. This means that the entity is optional.



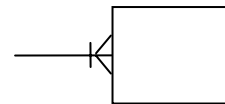
There *may* be **zero or more** occurrences of this entity. The relationship is optional.



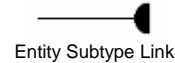
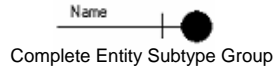
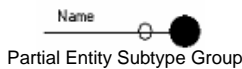
There *must* be **one and only one** occurrence of this entity. This means that the relationship is mandatory.



There *must* be **one or more** occurrences of this entity. The relationship is mandatory.

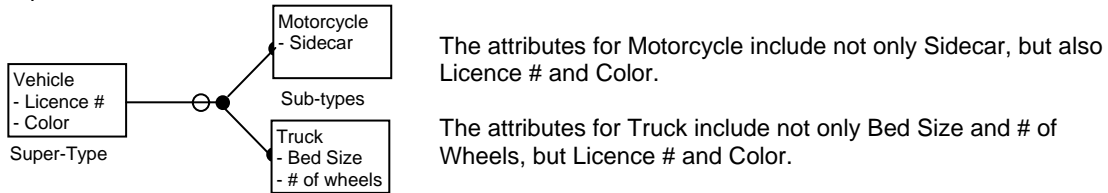


Entity Sub-type Groups: Entity subtype group icons link sub-type entities to the super-type entity. All subtype entities inherit the characteristics of the super-type entity. For example:



Group icons link subtype entities to the super-type entity. All subtype entities inherit the characteristics of the super-type entity. For example:

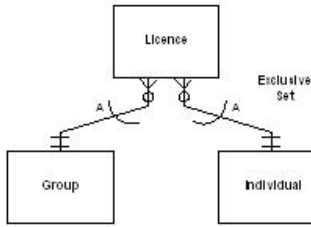
The circle indicates that the definition of subtypes for the super-type Vehicle is only partially complete. A line in this same location would indicate that all possible subtypes have been defined – indicating it as complete.



Types of vehicles that have not be explicitly defined would inherit only the characteristics of the Vehicle entity e.g. Car, ATV.

Exclusive Set:

An Exclusive Set describes a relationship between entities where, at any one time, only one of the relationships can be true. For example:



A Group *may* be the holder of one or more Licences.

An Individual *may* be the holder of one or more Licences.

A License *must* be issued to one and only one Group **or** One and only one Individual.

One license cannot be issued to both a group and an individual.

Additional Examples:

Interpreted as:

An Instructor *must* be teaching One or More Courses.

A Course *must* be taught by One and Only One Instructor.

An Instructor cannot exist unless they teach a course.

A Course cannot exist unless it has an Instructor. Tag-Team teaching by Instructors is not permitted.

A newly hired Instructor, not yet assigned to a course, may therefore not exist.

If the business rules are breached, the relationship between entities is incorrect. (See next example)

Interpreted as:

An Instructor *may* be teaching One or More Courses.

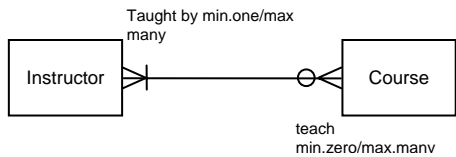
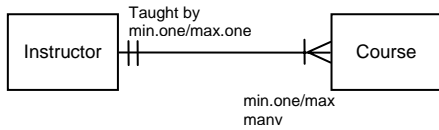
A Course *must* be taught by One or More Instructors.

A newly hired Instructor, not yet assigned to a course, can exist.

A new inexperienced Instructor, can be paired up with an experienced Instructor to teach a course until they are confident to teach solo.

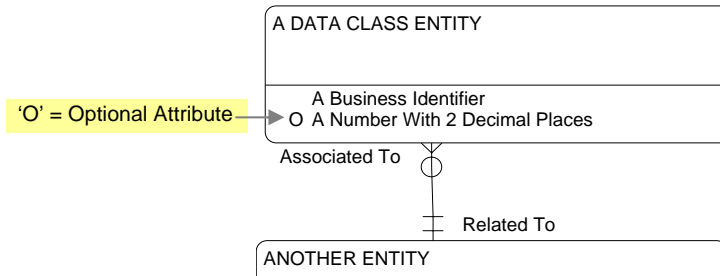
A Course cannot exist unless it has an Instructor.

Once again, if the business rules are breached, the relationship between entities is incorrect.



Appendix 2: Interpreting a Data Dictionary

General guidelines on how to interpret a Business View Logical Model Data Dictionary



Entity: A DATA CLASS ENTITY

2 Description:
This is an example of an Entity Description

4 A Business Identifier
This is the main Business Identifier.

8 Class: Business Identifier

5 Character (variable length string) **25** **Mandatory**

4 A Number With 2 Decimal Places
This is an example of a Data Item description.
This is an example of an Attribute Description.

8 Class: Measurement

6 **3** **2** **Optional** **7**

9 *This is an example of a Business Definition.*

10 Each A DATA CLASS ENTITY Must be Associated To One and only one ANOTHER ENTITY(s). Exclusive:

1. Entity Block
2. Entity Name and Description
3. Attribute Block
4. Attribute name (underlined) with item description (below). Sometimes, the item is also described at the attribute level to describe its specific usage within an entity.
5. Field Type. E.g.: Character, Numeric, Date etc...
6. Field Length and where applicable – number of decimal places. The maximum capacity for a field’s content is determined by the Item’s set length. With the examples above...
 - The 1st item, has been defined as a Character (Variable length string) field, with a maximum length of 25 characters.
 - The 2nd item has been defined as a Numeric field with a width of 3 including 2 decimal places. (9.99)
 Other numeric definition examples: 99.99 would be defined as 4 2, 999.9 as 4 1, 999 as 3 0 etc...
 Whenever numeric data items are defined, it is good practice to include an example in the item’s description.
7. Attribute Optionality within Entity. Optional attributes are prefixed with an ‘O’ within an Entity’s ERD.
8. Logical Class of the Data Item. Examples include:
 - Business Identifier: a field used by a business area as a reference to obtain more information.
 - Code: Where values are stored as a code – with the full value sometimes stored in a corresponding lookup table.
 - Date: For storing date information e.g.: Year, full or partial dates, character dates etc...
 - Description: For storing long descriptions.
 - Flag: Where the field is used to store a condition that may be used by the business area to trigger an event.
 - Identifier: Where field is used to store an identifier e.g.: a Licence Number.
 - Indicator: Usually Boolean e.g. Yes/No
 - Measurement: The unit of measure is also defined e.g.: mm, feet, kilograms etc...
 - Name: Where field is used to store a name. e.g.: Lake Rome
 - Quantity: Where a field stores a value that measures quantity. E.g.: Number of Moose Observed: 12
9. Business Definition. E.g.: *Valid Values in NRVIS_2NUM Lookup Table*
10. Entity Relationship Description